



Business Presentation 2024

VEDSHRI LIFE HERBS PVT. LTD

www.vedshrillifeherbs.com



OUR CEO & LEGAL DOCUMENTS

प्रिय डायरेक्ट सेलर,

Vedshri Life Herbs पर भरोसा करने और इस परिवार के साथ जुड़ने के लिए मैं आप सभी डायरेक्ट सेलर का हार्दिक स्वागत एवं अभिनंदन करता हूँ। स्वास्थ्य हमारे जीवन का बहुत ही महत्वपूर्ण हिस्सा है और इसको ठीक रखना हमारा सबसे पहला कर्तव्य है। शरीर को स्वस्थ रखने के लिए जरूरी है कि हम अपने शरीर को सभी जरूरी विटामिन्स और न्यूट्रिशन दे, ताकि हम स्वस्थ, सुंदर और मन से बेहतर महसूस करें | Vedshri Life Herbs ऐसे ही सप्लीमेंट और वैलनेस प्रोडक्ट प्रोवाइड करता है जो आपको और आपके परिवार के शरीर से जुड़ने वाली बीमारियों से सुरक्षा प्रदान करता है।

आज के इस आर्टिफिशियल इंटेलिजेंस (AI) के दौर में जहां तेजी से इंसानों का काम मशीनें कर रही हैं और जिसके कारण बेरोजगारी बढ़ती जा रही है। Vedshri Life Herbs का मिशन आपके स्वास्थ्य को बेहतर बनाने के साथ-साथ आपको आय अर्जित करने का एक अच्छा अवसर प्रदान करना है।

व्यावसायिक विशेषज्ञों का मानना है कि डायरेक्ट सेलिंग इंडस्ट्री भविष्य में रोजगार प्रदान करने का सबसे बड़ी इंडस्ट्री होगी। तो आइए, हम एक साथ मिलकर स्वास्थ्य और धन से परिपूर्ण जीवन की ओर कदम बढ़ाए !

MR. SATYA PRAKASH - CEO & MD



OUR MISSION

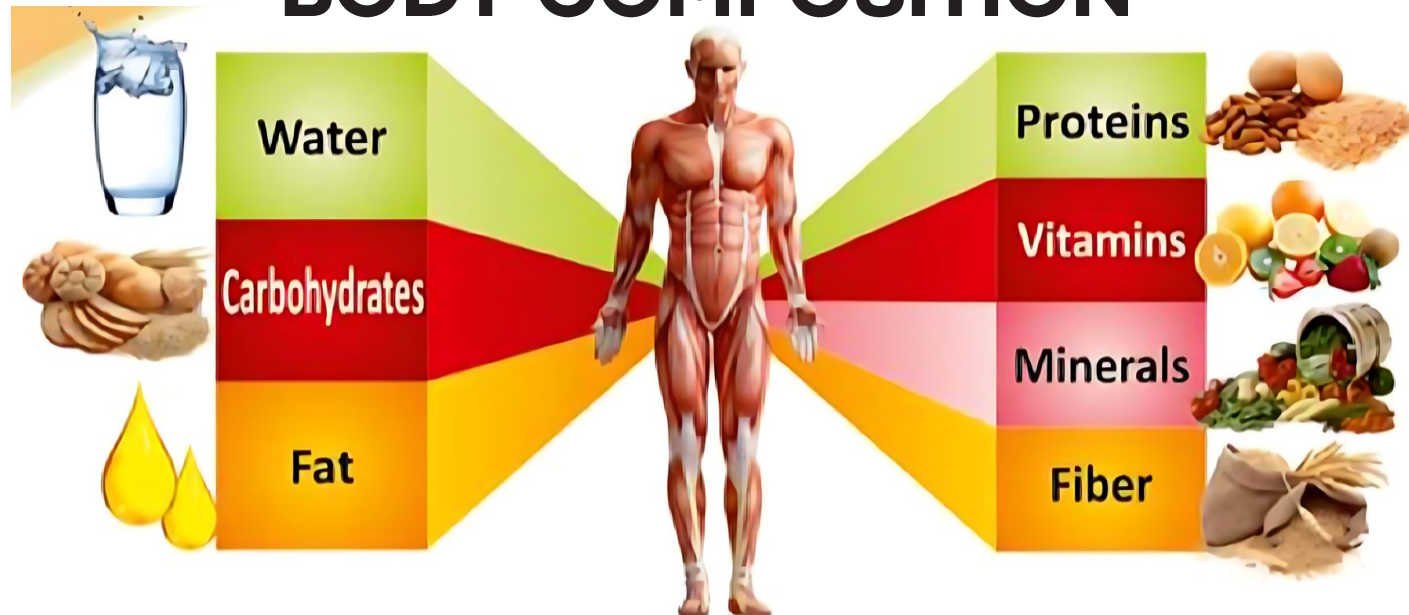
Healthy
India

Result Oriented
Products

Wealthy
India

Promote
Ayurveda

BODY COMPOSITION



We Require 7 Major Nutrients Daily For The Healthy Functioning Of Our Body, Namely Water, Carbohydrates, Fats, Proteins In Addition To Vitamins, Minerals And Fiber. We Often Consume Adequate Amounts Of Water, Carbohydrates And Fats But Our Intake Of Proteins, Vitamins, Minerals And Fiber May Be Lacking. Leading Health Authorities Such As WHO, ICMR And NIN Recommend Daily Intake Of Each Of These Types Of Nutrients As Per Their RDA Recommendations To Maintain Good Health.

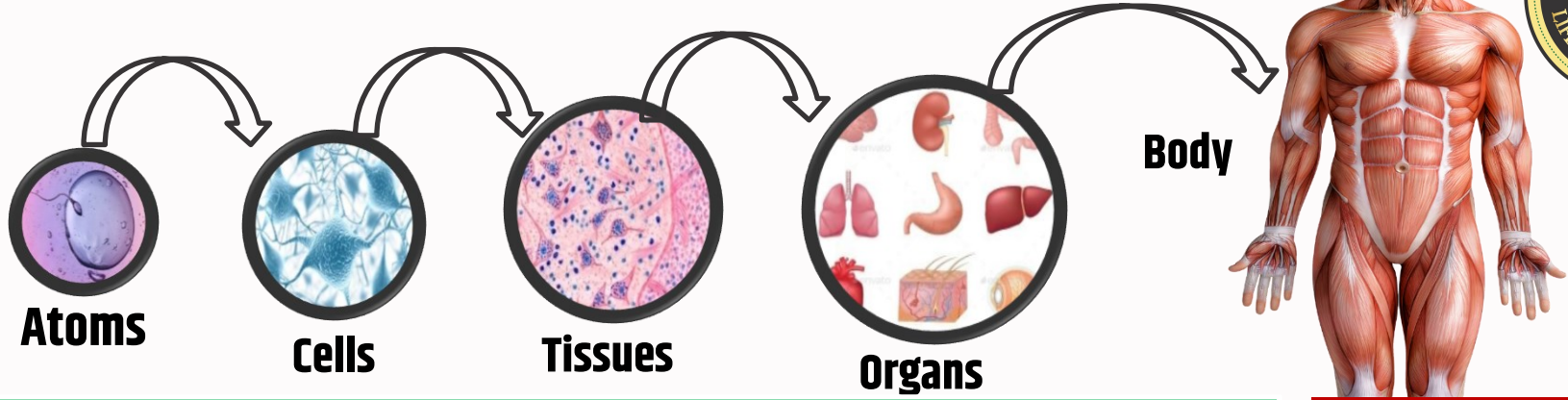
WHAT HAPPENS WHEN THE AMOUNT OF THESE ELEMENTS IN THE BODY ARE UNBALANCED ?

➤ Other Related Disease Like -

- **Bone & Joint Disorder**
- **Immunity System Disorder**
- **Diabetes**
- **Blood Pressure**
- **Nervous System Disorder**
- **Heart Disease**
- **Digestive System Disorder**
- **Eye Problems**
- **Memory Loss**
- **Hair Loss**



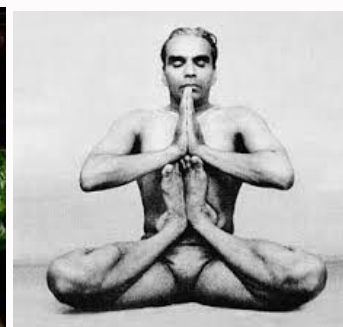
HUMAN ANATOMY



PAST

LIVING LONG

DYING SHORT



PRESENT

LIVING SHORT

DYING LONG



WHAT WENT WRONG ?



Earlier, The Food We Ate Was As Good As Medicine,
But Today, The Food We Eat Is As Good As Slow Poison.

WHAT YOUR BODY NEEDS ?

- Vitamins
- Trace elements
- Minerals
- Carbohydrates
- Fibres
- Unsaturated fats
- Proteins
- Amino acids
- Enzymes
- Herbs
- water



WHAT YOUR BODY DAILY GETS ?

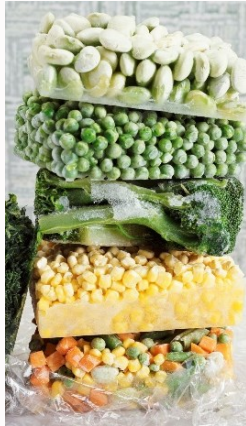
- Refined Products
- Animal products
- Boiled Fruits & Vegetables
- Meat
- Salt
- Sugar
- Cholesterol
- Caffeine
- Alcohol
- Medication
- Food addictive
- pesticides





Supply Is Low Against Demand Lack Of Nutrients

Your Body Don't Get The Right Nutrients From Today's Diet.



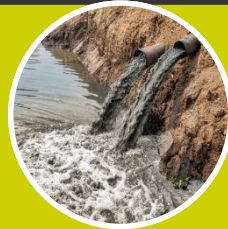
- Genetically Modified Crops.**
- Low Nutrient Levels In Soil.**
 - Toxic Pesticides From Gm Food Crops Are Found In Unborn Babies. Toxic Pesticides Which Are Implanted Into Genetically Modified Food Crops Have Lodged In The Blood Of Pregnant Women And Their Unborn Babies, Research Shows. - (Times Of India)
- Cooking Method**
 - Cooking Veggies For A Long Period Of Time, Or At A High Temperature Can Destroy The Nutrients, Including Those In The Liquid
- Storage & Transport**
 - Fruit And Vegetables Travel Thousands Of Miles To Reach Supermarkets.
 - Food That We Assume Is Fresh And Nutritious Is Often Quite The Reverse.
 - Ex : Spinach Stored At Room Temperature Loses Between 50 And 90 Percent Of Its Vitamin C Within 24 Hours Of Being Picked.

TOXINS FROM ENVIRONMENT



AIR POLLUTION

Air Pollution Is Thought To Be The Cause For 1 In10 Deaths Due To Lung Cancer Environmental Pollution Threatens Human Health. Air Pollution In Cities Causes A Shorter Lifespan For City Dwellers



WATER POLLUTION

Studies Show That The Alarming Rate Of Increase In Water Pollution Has Affected Millions Of Lives. More Than 780 Million People Do Not Have Access To Clean Water.



RADIATION POLLUTION

Radiation Breaks Down Water In Living Cells Into Dangerously Reactive Free Radicals Which Subject Our Bodies To A Continual Assault, Attacking Essential Molecules Of Life Such As DNA And Proteins.

HOW TO BRING BACK THE OPTIMAL HEALTH



Only Answer Is
Change Your Life Style

Optimal health



Fulfill The Nutritional Deficiency
With Nutritional Supplement &
Ancient Ayurveda

WELCOME TO Vedshri life Herbs Pvt. Ltd



आयुर्वेद अपनाइए
जीवन और पैसा दोनों बचाइए

We Have 5 Category

- 1) Health Care
- 2) Personal Care
- 3) Beauty Care
- 4) Oral Care
- 5) Food Supplement

आयुर्वेद अपनाइए जीवन और पैसा दोनों बचाइए



Multi Berry Juice

- Provide many nutrients
- High in fiber
- May help improve blood sugar & insulin response
- Loaded with antioxidants
- Help Fight Inflammation.
- May Help Lower Cholesterol levels.
- May be Good For Your Skin.

Ingredients:

Acaiberry, Strawberry, Mus berry, Cherry, Gooseberry, Morinda Citrofolia, Aloe vera Elwl, Rock Grapes, Nos, Ashwagandha, Mangosteen, Green Apple, Lemon, Orange, Ulchi Beef Root, Block Berry, Goji Berry, Pomegranate & Sea Buckthorn.

Directions For Use:

Shake well before use , Take 25-30ml Twice a day for adults
Store in a cool & dry place , Keep away from direct sun light
Tastes Best When Refrigerated

MRP = 699 || DP = 499 || PV = 250



Gyne Care Hebs

- It purifies the blood by removing impurities from the blood.
- It is very beneficial in hormonal disorders.
- It increases physical, mental energy & strength
- It also helps a lot in menstrual pain.
- Helpful in women's sexual health.

Ingredients:

Daru Harida Ext. , Chireta Ext. , Piper Cubes, Jalap Ext. , Bach Ext. ,Shivling Ext. ,Tajput Ext. Pippli Ext. ,Guduchi Ext. ,)Vidngs Ext. Deodar Est. , Jatamansi Ext. , Mango Ext. ,Bad Chhal Ext. , fleul Ext. , Ginger Est. ,Thring Raj Ext. , Zeera Ext. , Harir Ext. , Lodhea Ext. Amla Est. , Ashwgandha Ext. , Kamala Ext. ,Bahera Ext. , Jamun Ext. , Musta Ext.,,Shatawari Ext. , Dashmool Ext. , Ashoka Est. , Tulsi , Punarnava , Baheda, Haldi , Khair, Colve Ext.

Directions For Use:

Shake will before use 25-30 ml twice a day for adults or as directed by the physician.

MRP = 599 || DP = 399 || PV = 200



आयुर्वेद अपनाइए जीवन और पैसा दोनों बचाइए



Liver Care Herbs Ras

- May Help Promote Liver Health
- May Improve Liver Functioning
- May Protect From Toxic Substances
- Helps In Rejuvenating Damaged Liver Cells
- Helps In Detoxifying The Liver

Ingredients:

Bhuamla, makoya Punarnava, Triphala, Nagarmotha, Kasni, bhring raj, amaltas, sounf, giloya, chireta, kutki, Aloe vera, surpankha

Directions For Use:

Shake will before use 25-30 ml twice a day for adults or as directed by the physician.

MRP = 599 || DP = 399 || PV = 200



Dentocare Cream

- Anti Cavity Herbal Toothpaste
- Ida certified
- 100% vegan, sugar free, Gluten Free
- Herbs In Toothache
- Refresh Breathes
- For Healthier teeth & strong gums

Ingredients:

Babool Chhal (Acacia Arabica), Mulhathi (Glycyrrhiza Glabra) Lawang (Syzygium Aromaticum), Neem (Azadirachita Indica) Pudina Sat (Manthaspikata), Kapoor (Cinnamomum Camphora) Haldi (Curcuma Longa)

Directions For Use:

Apply On Teeth With Tooth Brush Gently Twice A Day Or As Directed By The Physician

MRP = 175 || DP = 120 || PV = 40



आयुर्वेद अपनाइए जीवन और पैसा दोनों बचाइए



Ayurveda Bathing Soap

- Pure Herbal and Ayurvedic Bar
- It may have antibacterial and antifungal properties
- It helps protect the skin from external bacteria
- It helps reduce acne
- Cleanse and nourish skin

INGREDIENTS:

Coconut, Almond, Tulsi, Neem, Aloe vera & Castor

DIRECTIONS FOR USE:

As Needed Or Required On Body Or As Directed By The Physician



MRP = 75 || DP = 50 || PV = 15

Herbal Face Cream

- Reduces Inflammation And Swelling
- Aids Acne-prone Skin, Soothes Irritation
- Provides Base For Hydration
- It Prevents Skin Patches
- May Be Helpful In Anti-aging, Anti-wrinkle, Anti-oxidant, Anti-pimple, Anti-septic, And Natural Sunscreen.
- Can Help In Removing Dark Spots.

INGREDIENTS:

Aloe vera Ras, Cucumber Ras

Directions For Use:

Apply Cream All Over The Face And Neck In Upward Circular Motion Twice A Day.



MRP = 299 || DP = 199 || PV = 75

Easy & Free Sanitary Pad

- The pads are petal soft and come in 7 layers of natural fibers like cotton and wood pulp
- It keeps you rash free and away from itching with a feeling of freshness all through.
- It is completely eco-friendly, non-plastic and completely safe.
- It contains Anion strips which act as painkillers for menstrual cramps and fatigue.
- It helps you maintain a dry and hygienic feel all through the menstrual cycle keeping you away from bacterial infection
- It has an amazing absorption capacity
- By purchasing petals you contribute to a healthy environment and plastic free society.

INGREDIENTS:

100% Bamboo natural Fibers & Anion Chip

Directions For Use:

Change its Every 8 - 12 Hours



MRP = 149 || DP = 99 || PV = 30

Happiness Health Wealth OPPORTUNITY

Use

Result

Share

Use The Product

Get The Result

Share With People



Our Maximum Team Sales Incentive



WELCOME CATEGORY

Weekly Maximum Team Sales Incentive = 50,000

1000
PV

2500
PV

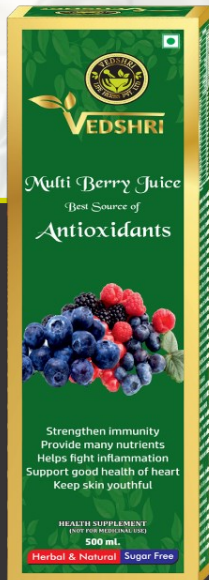
EXECUTIVE CATEGORY

Weekly Maximum Team Sales Incentive = 1,00,000

PREMIUM CATEGORY

Weekly Maximum Team Sales Incentive = 1,50,000

5000
PV



Retail Profit 20%

MRP - DP = RETAIL PROFIT

MRP = ₹ 699

DP = ₹ 499

RETAIL PROFIT = ₹ 200

MATCHING INCOME 20% & RANK REWARD



5000 : 5000 = 1000/-

YOU

**A
TEAM**

6000 PV

**A
TEAM**

5000 PV

Matching PV = 5000 PV

Matching Income = 1000/-

Carry Forward PV (Team A) = 1000 PV

10000 : 10000 = 3000/-

YOU

**A
TEAM**

15000 PV

**A
TEAM**

10000 PV

Matching PV = 10000 PV

Matching Income = ₹ 2000/-

Reward Income = ₹ 1000/-

Total Income = ₹ 3000/-

Carry Forward PV (Team A) = 5000 PV

NO TIME LIMIT – NO CONDITION



S/N	RANK	PV MAITCHING	MATCHING INCOME	RANK REWARD	TOTAL INCOME	AWARDS	NOMINEE FUND
1	BRONZE	10000	2000	1000	3000	-	-
2	SILVER	25000	5000	2000	7000	-	-
3	GOLD	75000	15000	5000	20000	SUIT LENGTH WITH SHIRT	-
4	PLATINUM	1.5 LAC	30000	10000	40000	WRIST WATCH	-
5	PEARL	5 LAC	1 LAC	25000	125000	2N/3D SHIMLA TOUR (SELF)	50000
6	RUBY	12.5 LAC	2.5 LAC	50000	3 LAC	2N/3D GOA TOUR (COUPLE)	1 LAC
7	SAPPHIRE	30 LAC	6 LAC	1 LAC	7 LAC	THAILAND TOUR (SELF)	2 LAC
8	DIAMOND	1 CR.	20 LAC	3 LAC	23 LAC	3 LAC CAR FUND	3 LAC
9	BLUE DIAMOND	2.5 CR.	50 LAC	6 LAC	56 LAC	3N/4D DUBAI TOUR (COUPLE + 2 CHILD)	4 LAC
10	BLACK DIAMOND	5 CR.	1 CR.	10 LAC	1.10 LAC	4N/5D HONGKONG (SELF)	5 LAC
11	ROYAL DIAMOND	10 CR.	2 CR.	20 LAC	2.2 CR.	4N/5D SWITZERLAND TOUR (COUPLE + 2 CHILD)	6 LAC
12	CROWN DIAMOND	25 CR.	5 CR.	50 LAC	5.5 CR.	4N/5D ST. PETERSBURG (SELF)	7 LAC
13	UNIVERSAL DIAMOND	50 CR.	10 CR.	1 CR.	11 CR.	4N/5D SINGAPORE TOUR (COUPLE + 2 CHILD)	8 LAC
14	UNIVERSAL ROYAL DIAMOND	100 CR.	20 CR.	2 CR.	22 CR.	5N/6D AUSTRALIA TOUR (COUPLE + 2 CHILD)	9 LAC
15	UNIVERSAL CROWN	250 CR.	50 CR.	5 CR.	55 CR.	1 CR. HOUSE FUND	10 LAC

NOTE FOR NOMINEE FUND

- Please Complete Your KYC With Nominee Details For The Nominated Fund.
- This Is Applicable For Direct Seller Distributors 18+ And Older.
- If Any Mishap Occurs, Please Confirm The Official Mail Of Your Upline, Sponsor, Management, And Company Within 30 Days To Get The Benefit Of The Nominated Fund.



- ✉ info@vedshrillifeherbs.com
- 🌐 www.vedshrillifeherbs.com
- 📍 Varanasi, Uttar Pradesh

Our Banking Partner



VEDSHRI LIFE HERBS PVT. LTD.

Bank Name:- Axis Bank

A/c No. – 924020005521477

IFSC Code - UTIB0005327

Branch - Ashok Nagar,
Pandaypur Varanasi



HEAD OFFICE ADDRESS
Ramjiyavan Nagar, Nathupur,
Bhullanpur PAC, Varanasi
Uttar Pradesh - 221108.

THANK YOU